

Awarded by



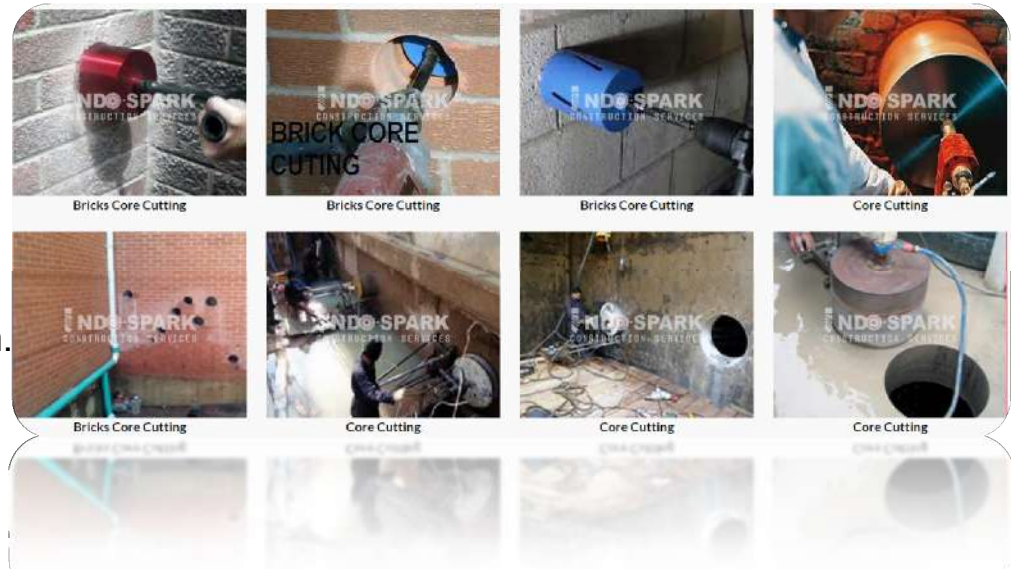
CORE DRILLING

Key Features :-

- For drilling holes in R.C.C. structure (beam / column/ slab) of dia. more than 25mm to 450mm can be done with diamond drilling system.
- To know the compressive strength of existing beam, column or concrete structure we can recover the core from existing building.
- Openings cut through reinforced concrete, precast concrete, brick, cinderblock, and other structural material.
- Openings cut through floors and walls. ➡



- ➡
- Openings cut for doors, windows, ducts and pipes through walls and floors.
 - Cuttings to remove part or all of existing walls.
 - Cutting openings for large diameter pipes.
 - Commercial and residential work, Clean, efficient & quiet. No job too large or too small, Free estimates.
 - Core cutting work capacity from 12mm to 1000mm.
 - Core cutting work in Rcc Slabs for depths up to 3 meter.



<http://www.indospark.com/iscs-services.html>